

This document contains driver installation instructions for Windows 10, 8, 7, Vista, XP.

Please refer to the section that matches your version of Windows.

Tecella
97 Chaumont Cir
Foothill Ranch, CA 92610, USA
www.tecella.com
info@tecella.com
+1-714-641-1709
+1-714-641-1569 Fax

Installing the Tecella Driver on Windows 10

Document Revision 2.3
January 30, 2017

Tecella
97 Chaumont Cir
Foothill Ranch, CA 92610, USA
www.tecella.com
info@tecella.com
+1-714-641-1709
+1-714-641-1569 Fax

1. Introduction

For Windows 8, 8.1, and 10 systems, Driver Signature Enforcement needs to be disabled during Tecella driver installation.

This document outlines the steps for properly installing the Tecella driver on a Windows 10 system.

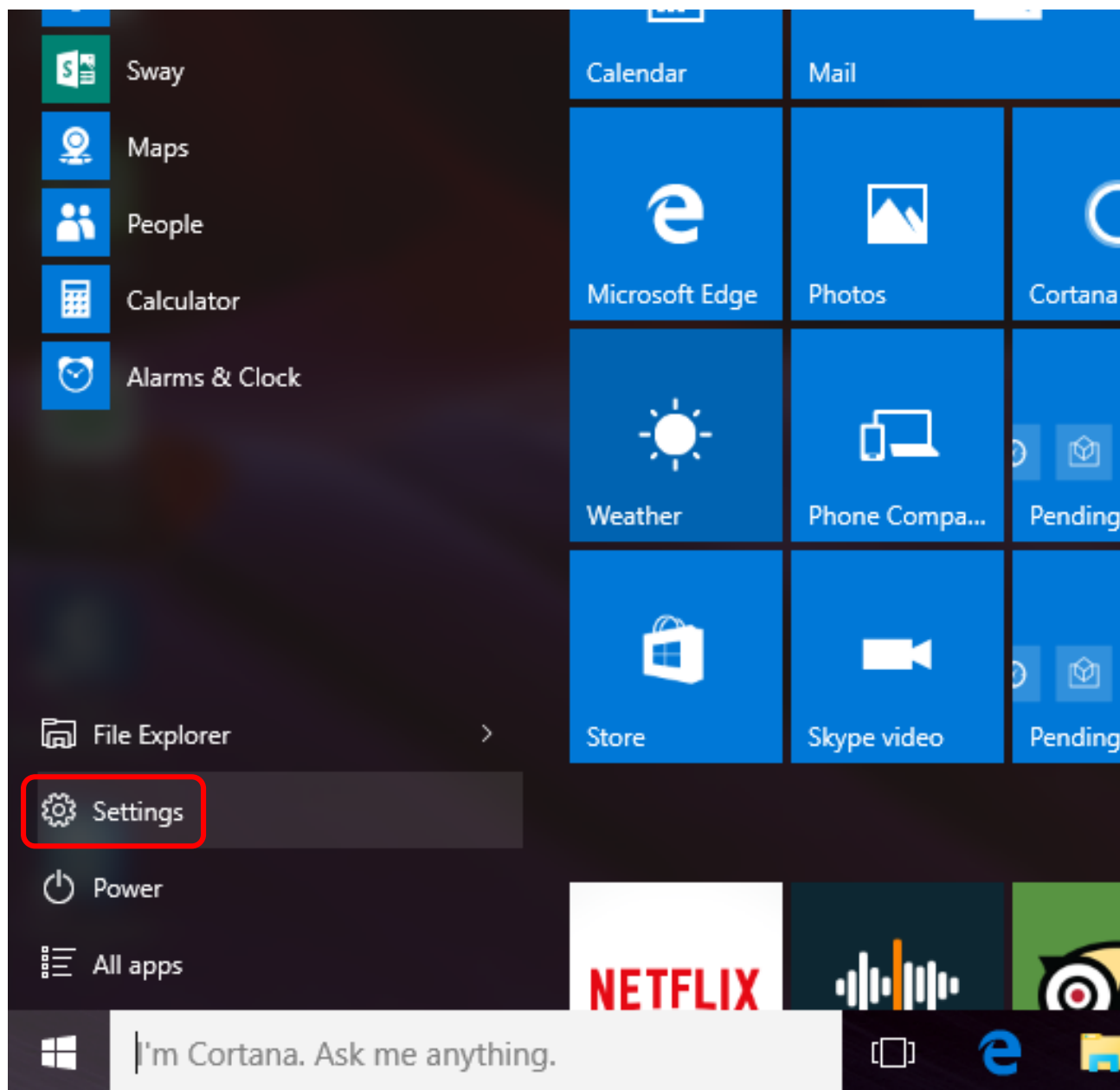
1.1 Minimum Computer Requirements

The following are the minimum computer requirements.

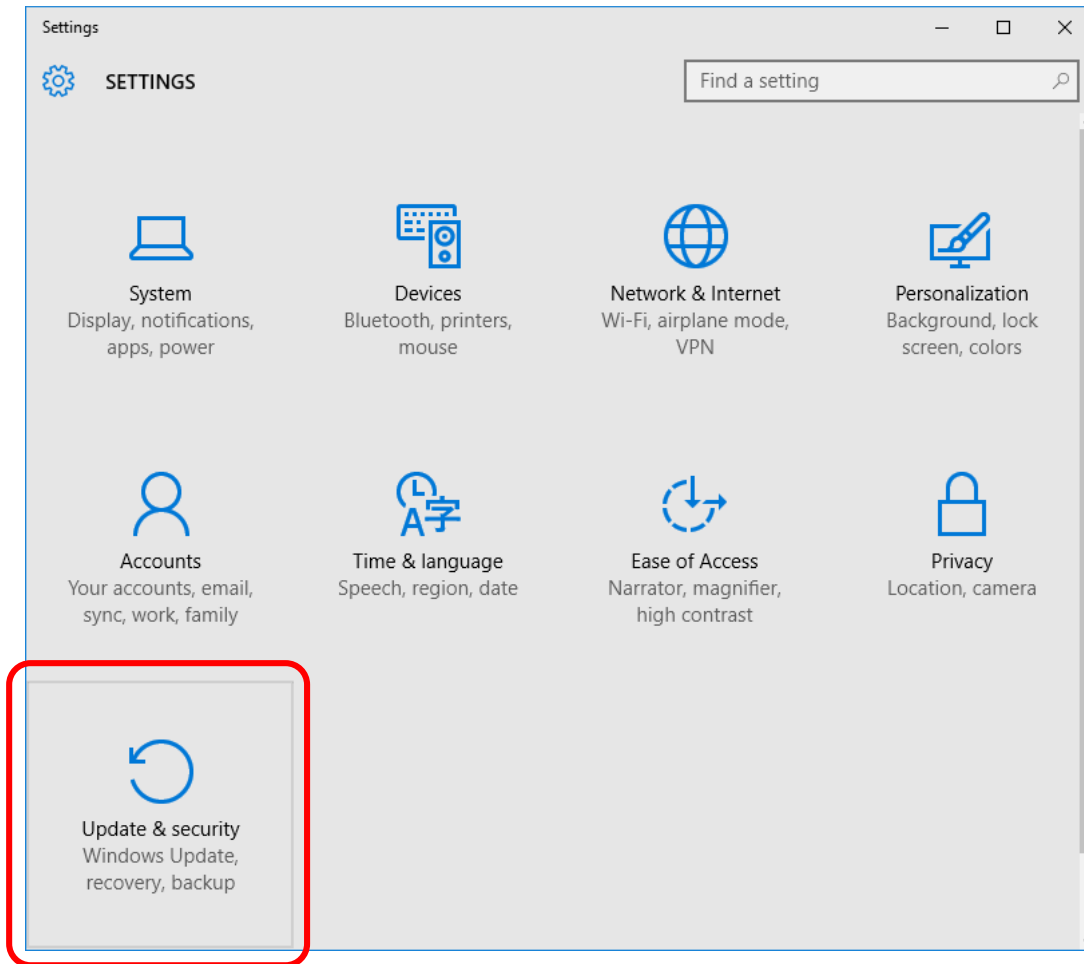
- Processor (CPU)
 - Any multi-core Intel or AMD processor, or
 - Minimum 2GHz single-core Intel or AMD processor
- 3GB RAM (4GB or more recommended)
- 5GB free space on Hard Drive
- One free USB 2.0 port
- Windows 10, 8.1, 8, 7, Vista, XP

2. Disabling Driver Signature Enforcement for Windows 10

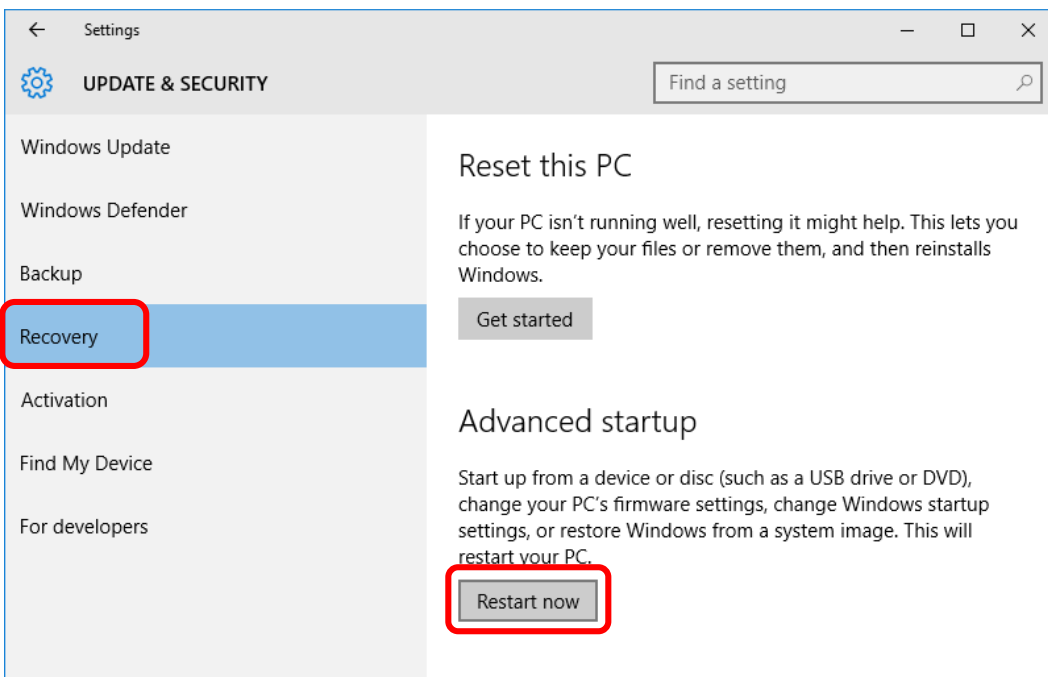
Step 1: Open the Settings icon. Click on Start (Windows icon) in the bottom left corner, and then click on the “Settings” icon.



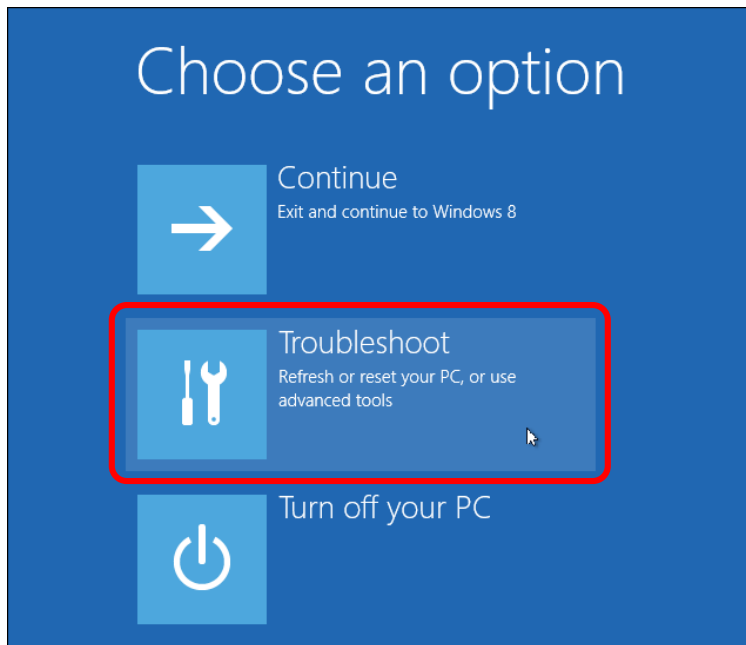
Step 2: In the “Settings” window, click on “Update & security”.



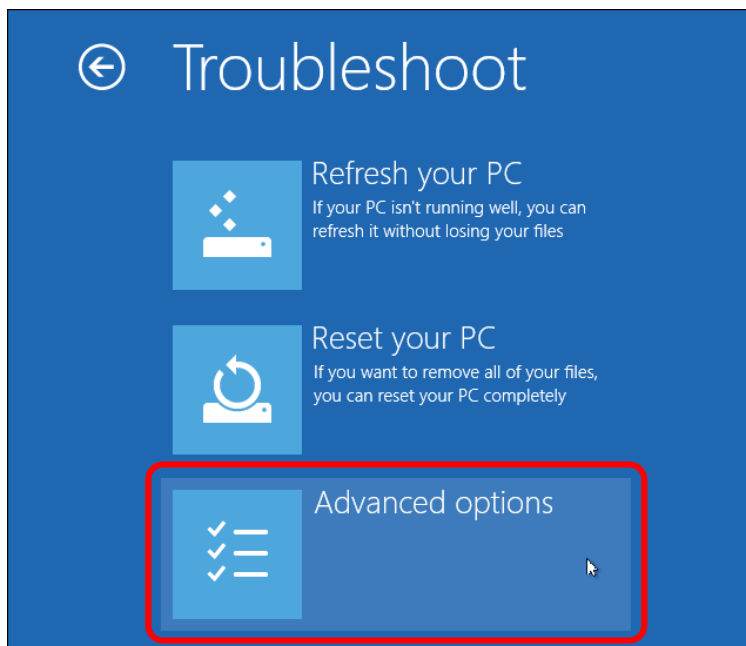
Step 3: In “UPDATE & SECURITY”, click on “Recovery”. Then, under “Advanced startup”, click on “Restart now”.



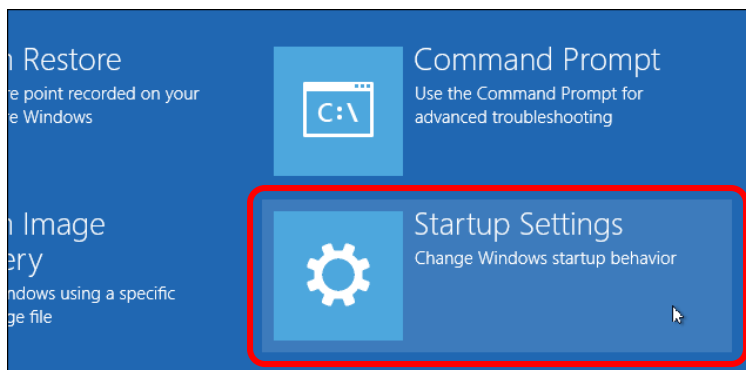
Step 4: Click on "Troubleshoot".



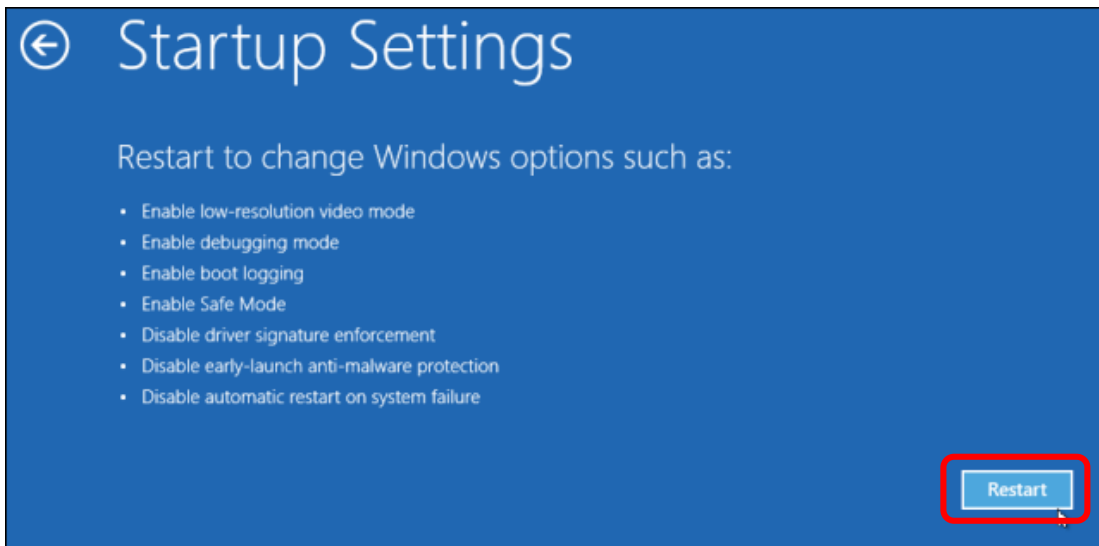
Step 5: Click on "Advanced options".



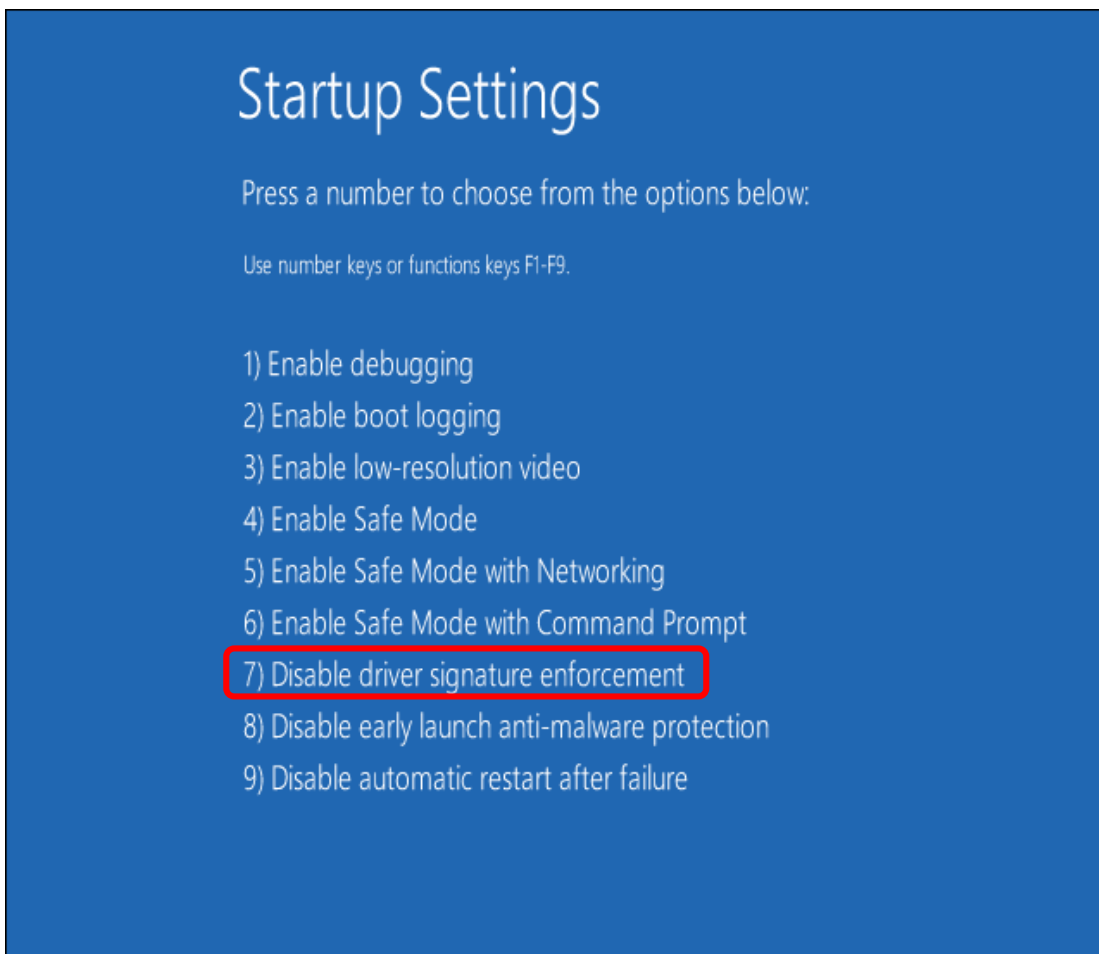
Step 6: Click on "Startup Settings".



Step 7: Click on “Restart” at the lower right.

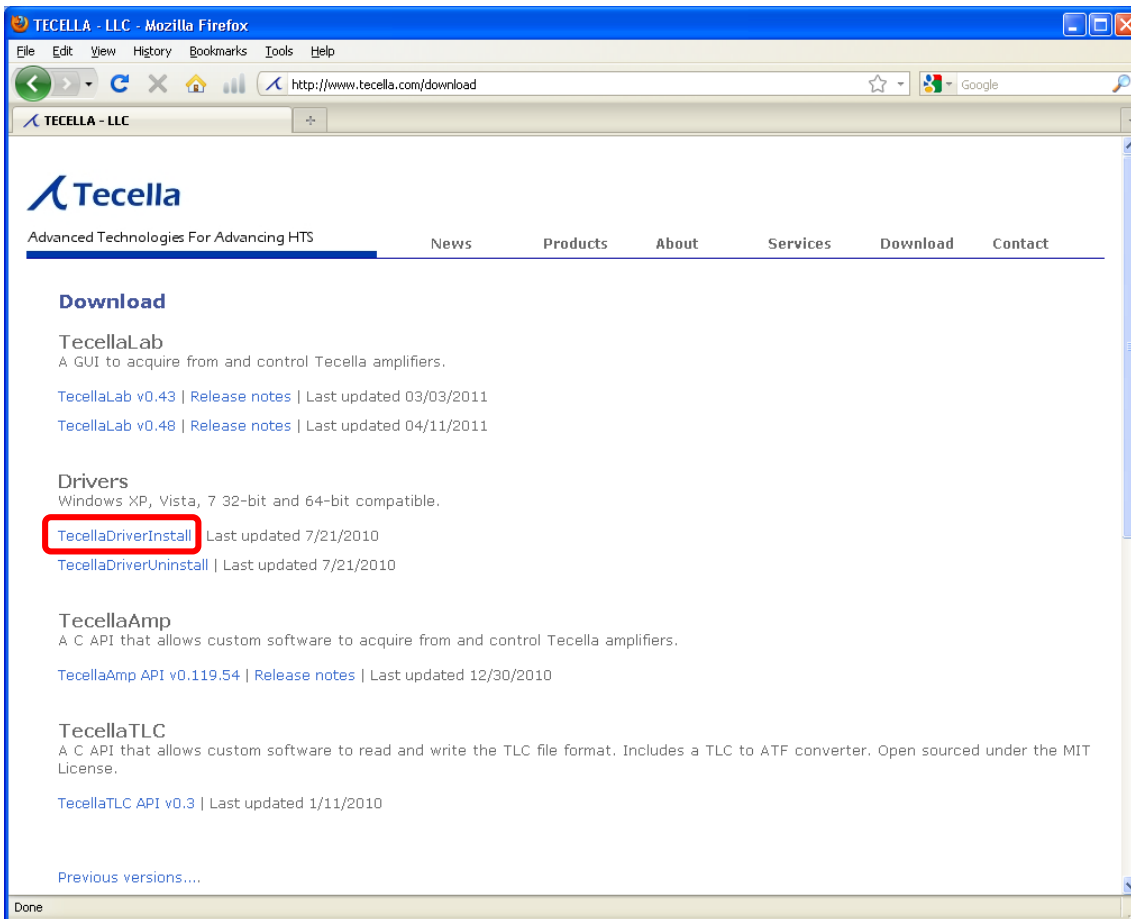


Step 8: When the Startup Settings screen is displayed, type “7” or “F7” to select the “Disable driver signature enforcement” option. Windows 8 will reboot.

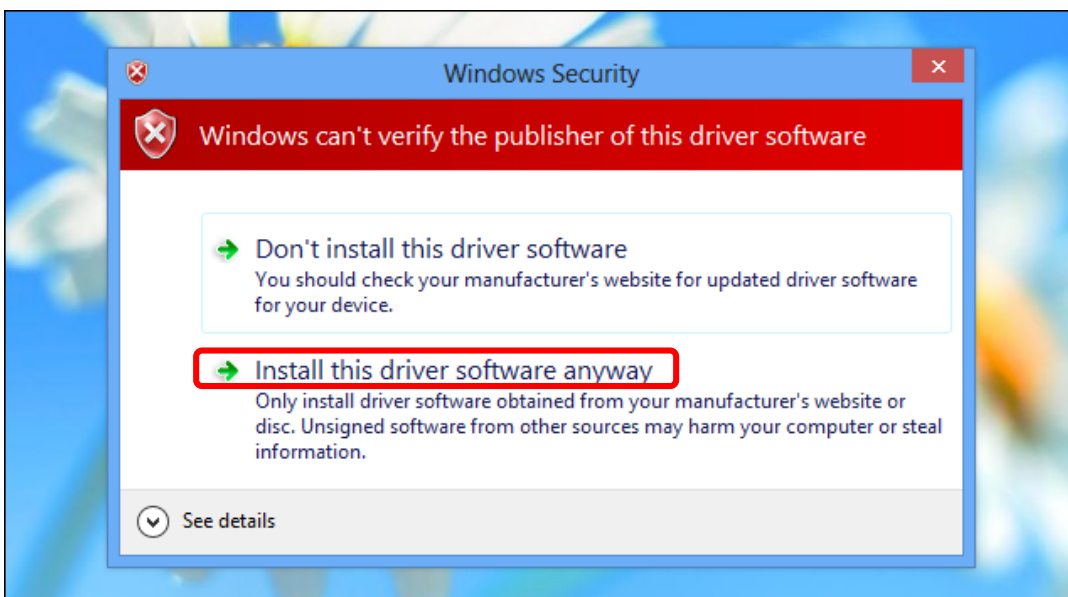


3. Install the driver

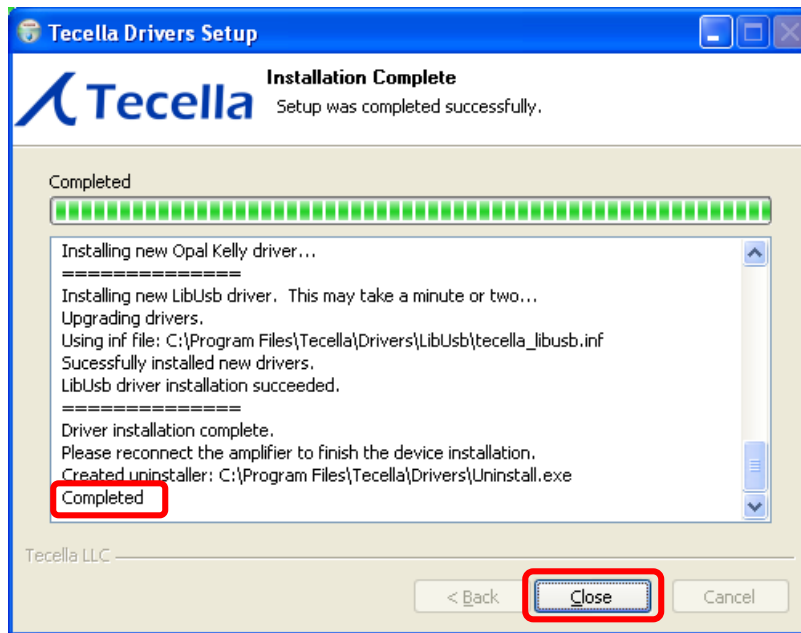
Go to www.tecella.com/download and click on “TecellaDriverInstall” link to download the driver installer to your computer. If your product came with a CD, then the TecellaDriverInstall file can also be found on the CD.



Double click on the TecellaDriverInstall file to run the installer on your computer, and follow the directions on the screen. During driver installation, if the following warning is displayed, then select “Install this driver software anyway”.



After successful completion, the driver installer window should look like below. Click on “Close” to close the driver installer window.



Installing the Tecella Driver on Windows 8

Document Revision 2.3
January 30, 2017

Tecella
97 Chaumont Cir
Foothill Ranch, CA 92610, USA
www.tecella.com
info@tecella.com
+1-714-641-1709
+1-714-641-1569 Fax

1. Introduction

For Windows 8, Driver Signature Enforcement needs to be disabled during Tecella driver installation.

This document outlines the steps for properly installing the Tecella driver on a Windows 8 system.

1.1 Minimum Computer Requirements

The following are the minimum computer requirements.

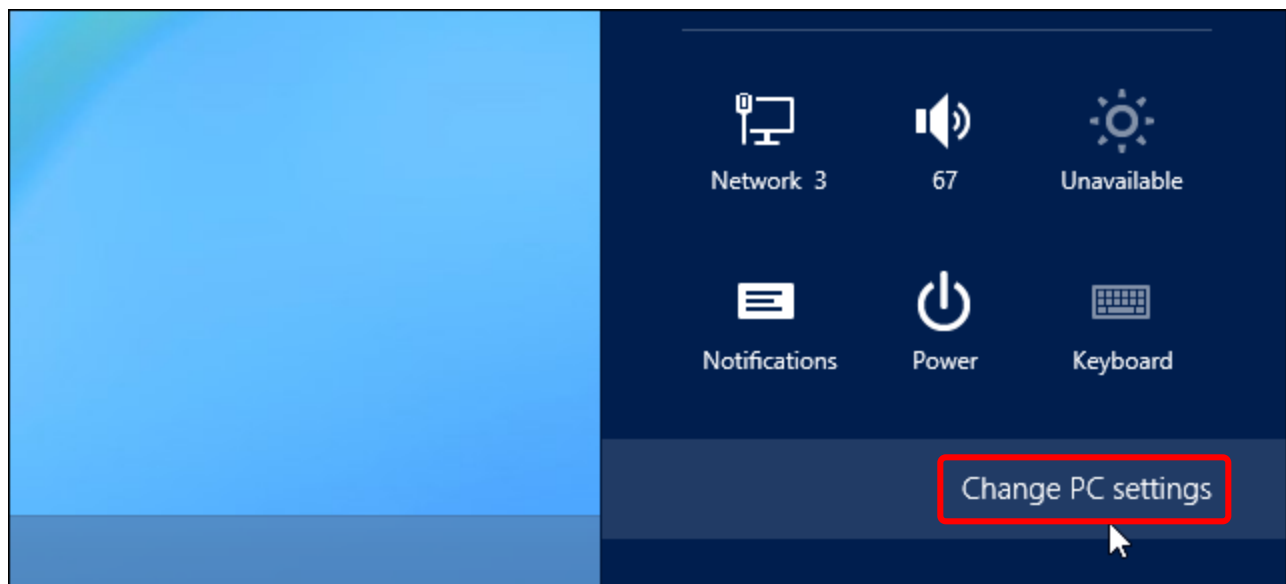
- Processor (CPU)
 - Any multi-core Intel or AMD processor, or
 - Minimum 2GHz single-core Intel or AMD processor
- 3GB RAM (4GB or more recommended)
- 5GB free space on Hard Drive
- One free USB 2.0 port
- Windows 10, 8.1, 8, 7, Vista, XP

2. Disabling Driver Signature Enforcement for Windows 8

Step 1: Open the Settings icon. Move your mouse to the bottom-right corner of your screen, then click on the Settings icon.

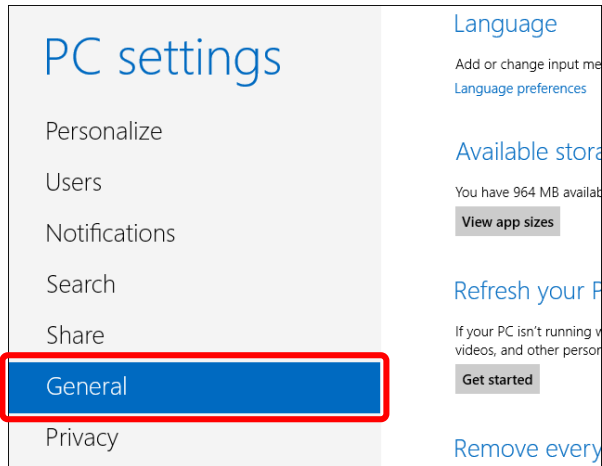


Step 2: Click on "Change PC settings" at the bottom.

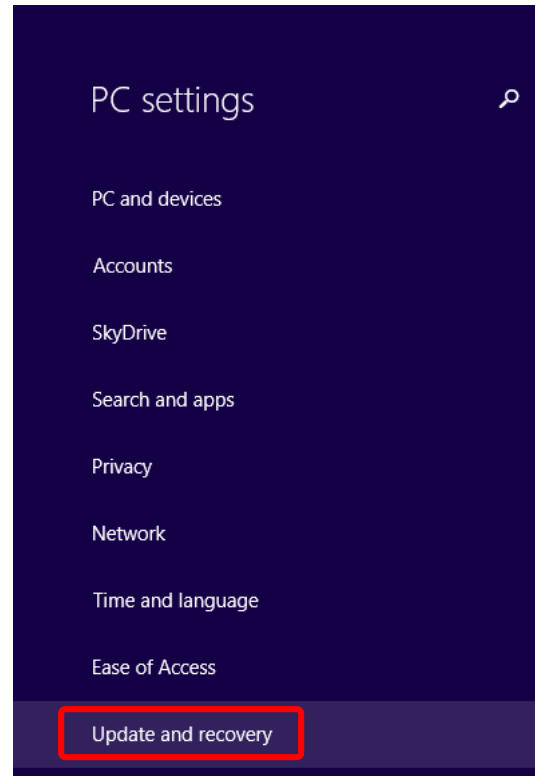


Step 3: Windows 8 and 8.1 differ on how to get to “Advanced startup”. For Windows 8, follow the path below on the left. For Windows 8.1, follow the path below on the right.

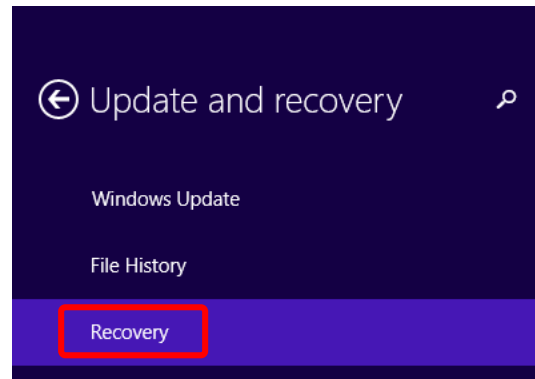
Window 8
Click on “General”.



Window 8.1
Click on “Update and recovery”.



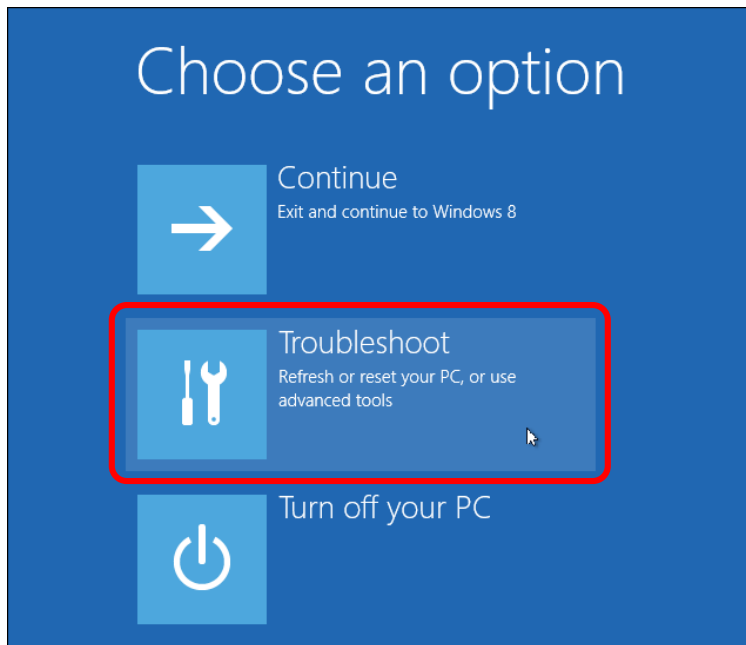
Then, click on “Recovery”.



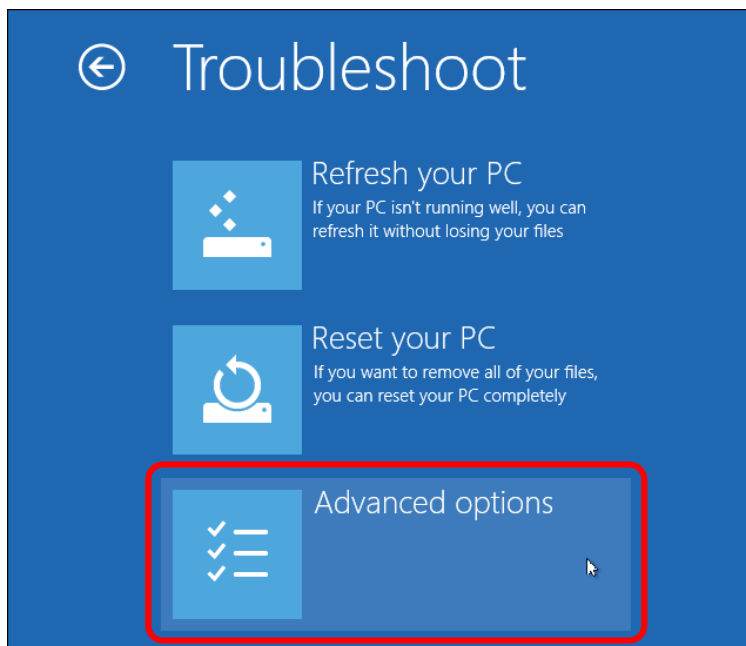
Step 4: Scroll down to “Advanced startup”, then click on “Restart now” below it.



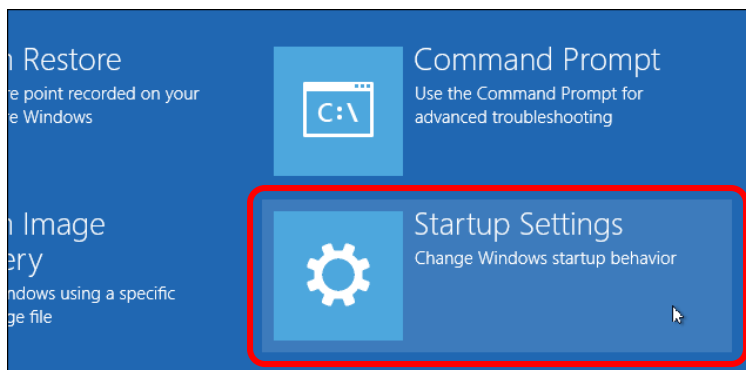
Step 5: Click on "Troubleshoot".



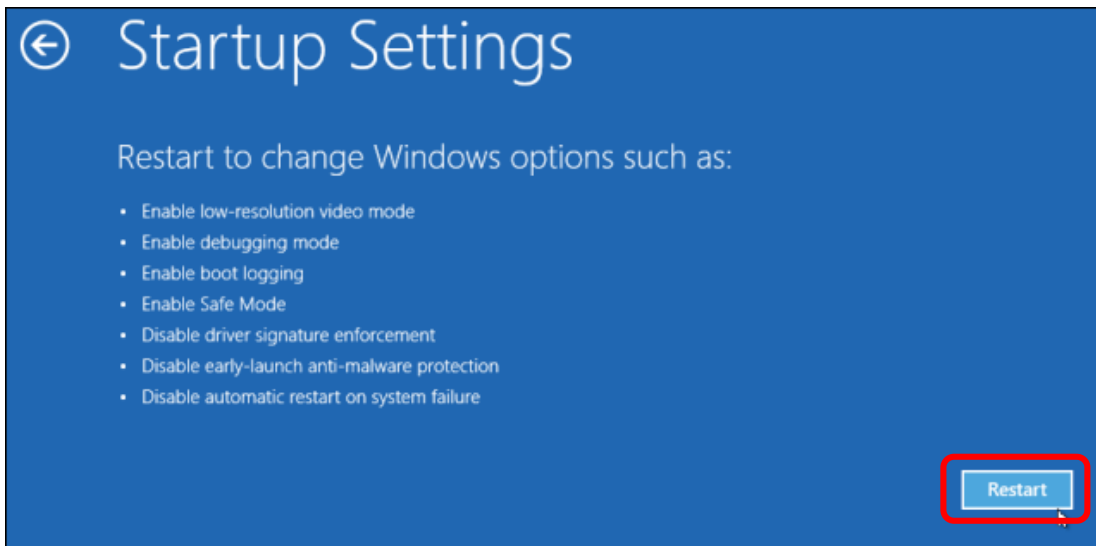
Step 6: Click on "Advanced options".



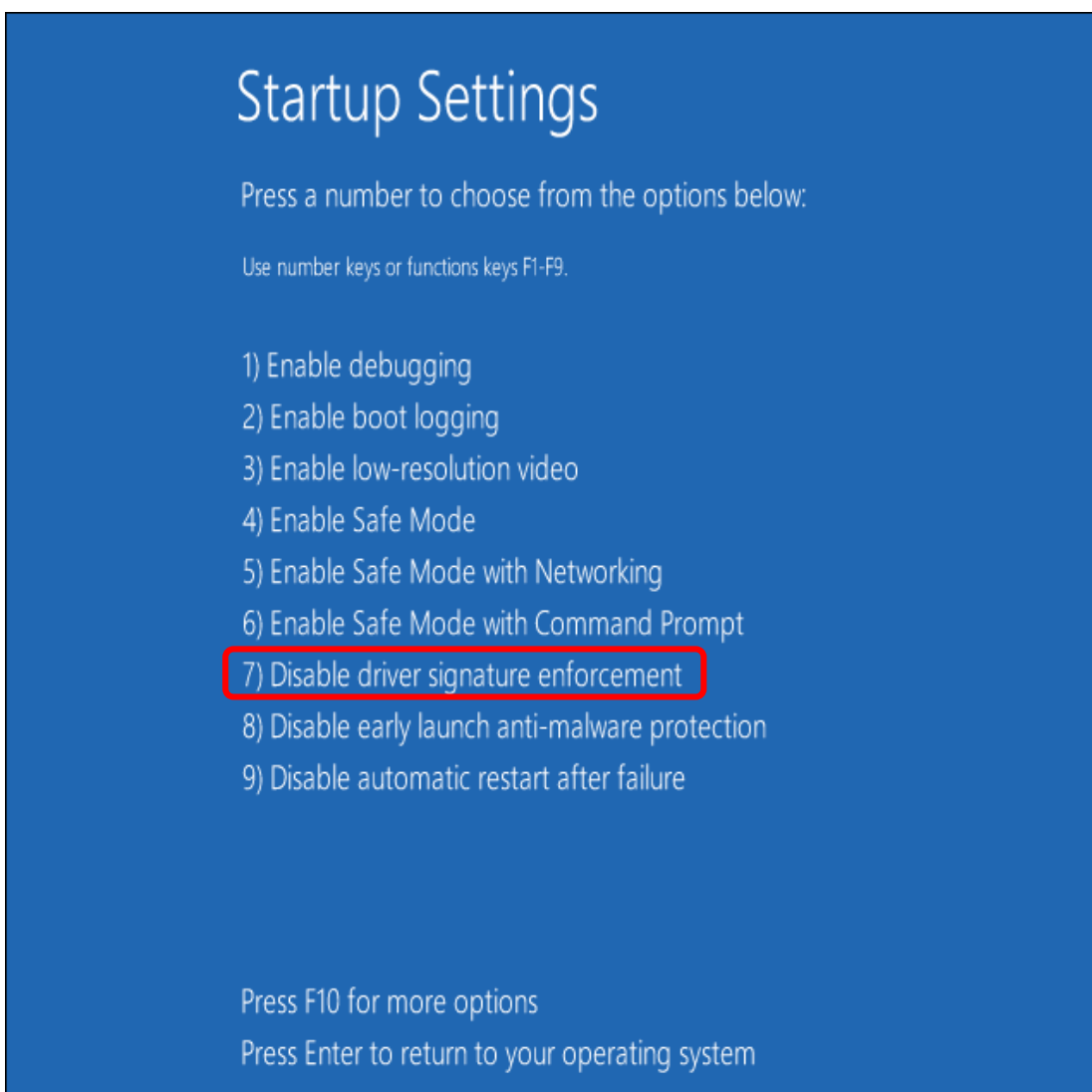
Step 7: Click on "Startup Settings".



Step 8: Click on “Restart” at the lower right.

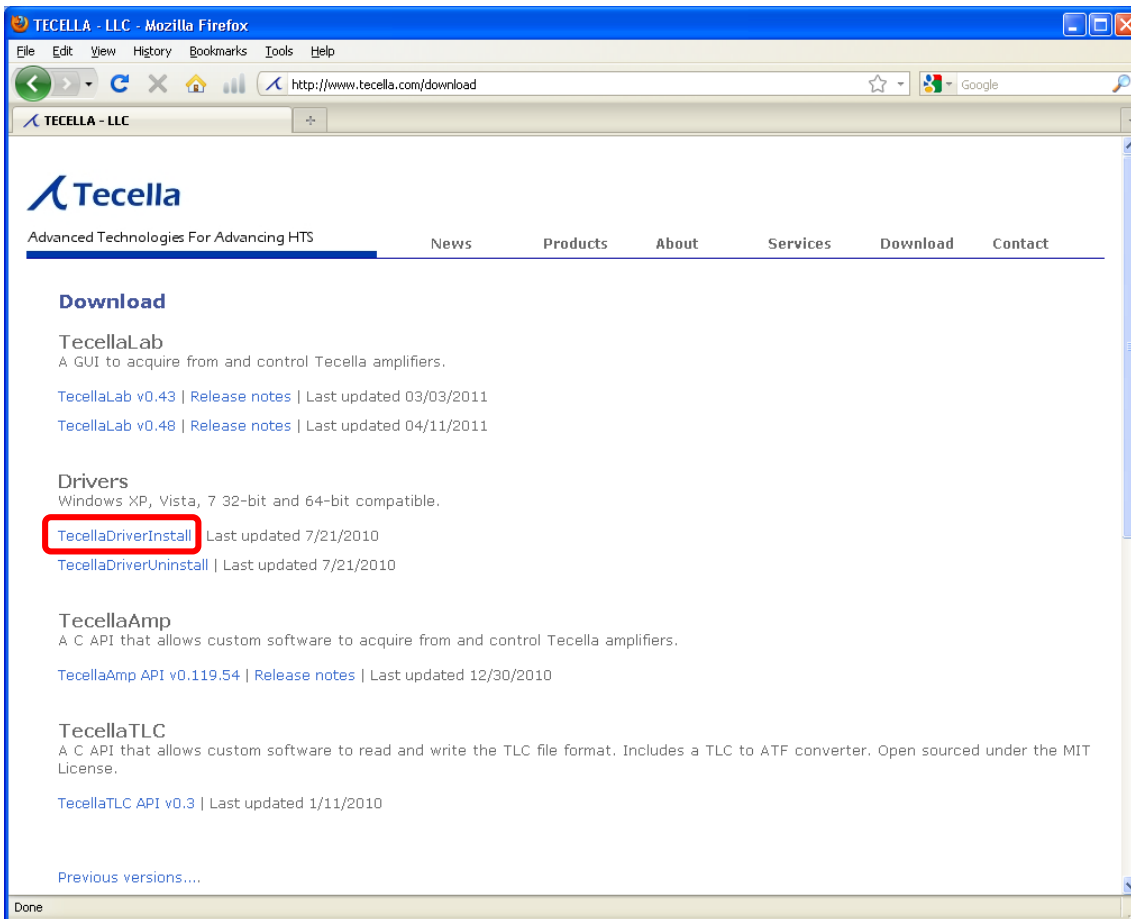


Step 9: When the Startup Settings screen is displayed, type “7” or “F7” to select the “Disable driver signature enforcement” option. Windows 8 will reboot.

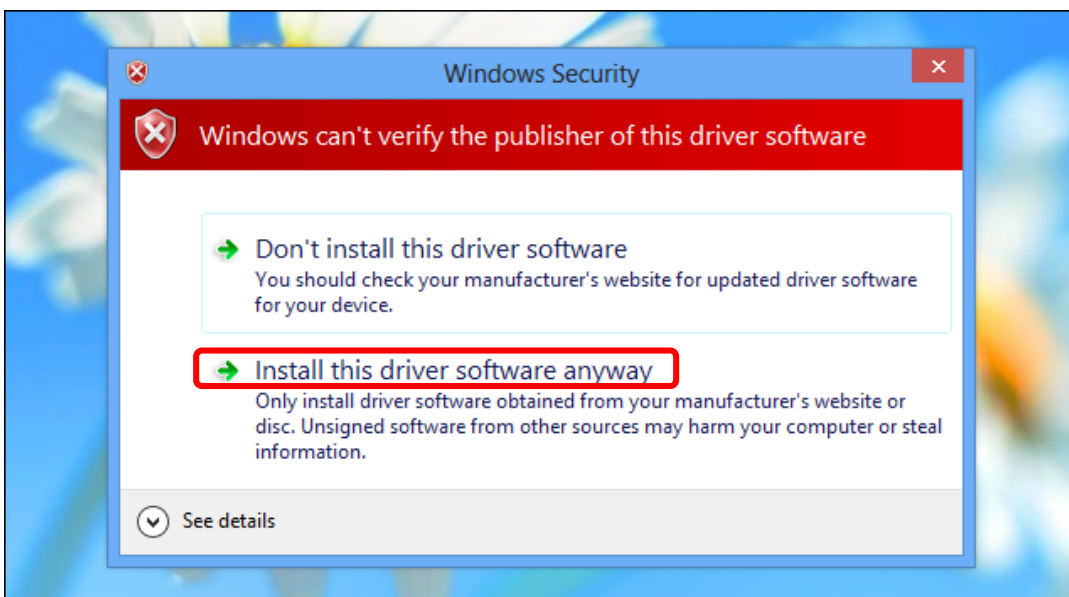


3. Install the driver

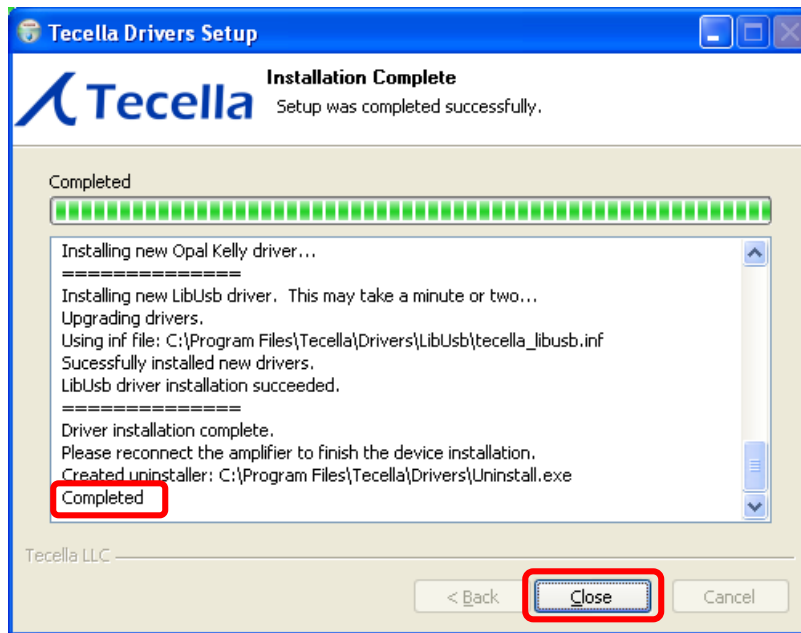
Go to www.tecella.com/download and click on “TecellaDriverInstall” link to download the driver installer to your computer. If your product came with a CD, then the TecellaDriverInstall file can also be found on the CD.



Double click on the TecellaDriverInstall file to run the installer on your computer, and follow the directions on the screen. During driver installation, if the following warning is displayed, then select “Install this driver software anyway”.



After successful completion, the driver installer window should look like below. Click on “Close” to close the driver installer window.



Installing the Tecella Driver on Windows 7 and Vista

Document Revision 2.3
January 30, 2017

Tecella
97 Chaumont Cir
Foothill Ranch, CA 92610, USA
www.tecella.com
info@tecella.com
+1-714-641-1709
+1-714-641-1569 Fax

1. Introduction

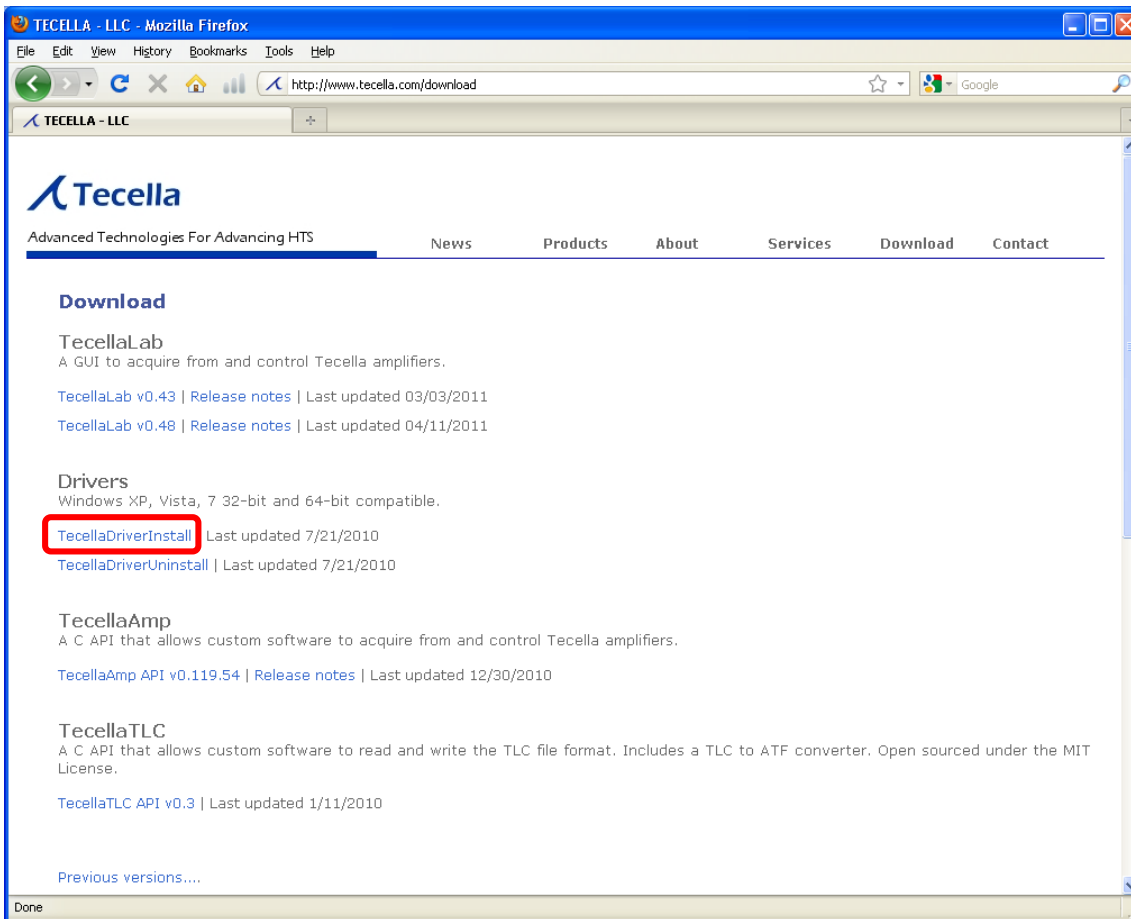
1.1 Minimum Computer Requirements

The following are the minimum computer requirements.

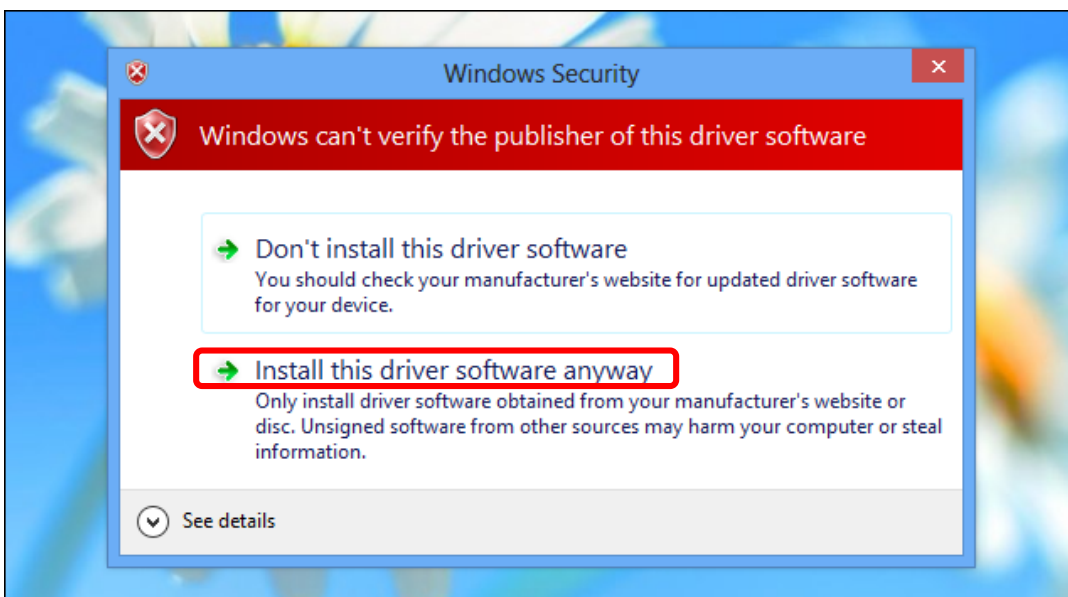
- Processor (CPU)
 - Any multi-core Intel or AMD processor, or
 - Minimum 2GHz single-core Intel or AMD processor
- 3GB RAM (4GB or more recommended)
- 5GB free space on Hard Drive
- One free USB 2.0 port
- Windows 10, 8.1, 8, 7, Vista, XP

2. Install the driver

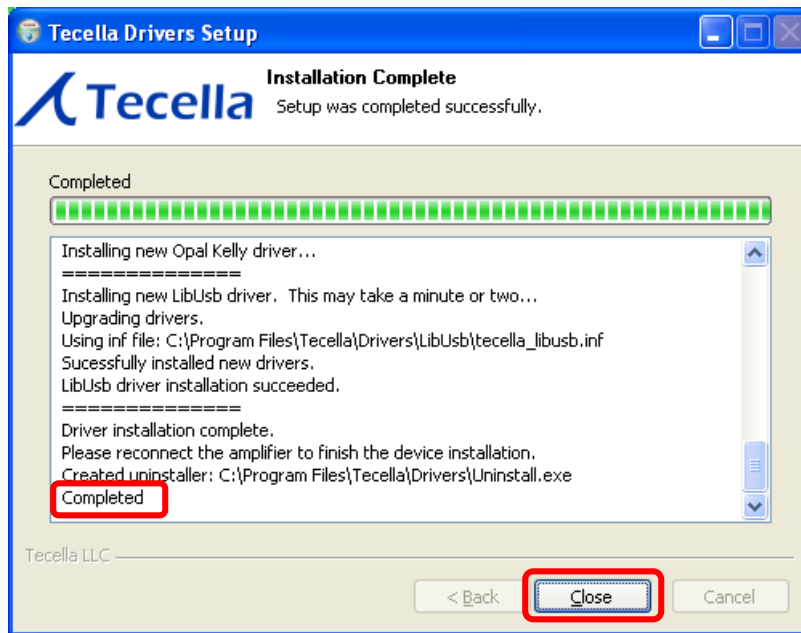
Go to www.tecella.com/download and click on “TecellaDriverInstall” link to download the driver installer to your computer. If your product came with a CD, then the TecellaDriverInstall file can also be found on the CD.



Double click on the TecellaDriverInstall file to run the installer on your computer, and follow the directions on the screen. During driver installation, if the following warning is displayed, then select “Install this driver software anyway”.



After successful completion, the driver installer window should look like below. Click on “Close” to close the driver installer window.



Installing the Tecella Driver on Windows XP

Document Revision 2.3
January 30, 2017

Tecella
97 Chaumont Cir
Foothill Ranch, CA 92610, USA
www.tecella.com
info@tecella.com
+1-714-641-1709
+1-714-641-1569 Fax

1. Introduction

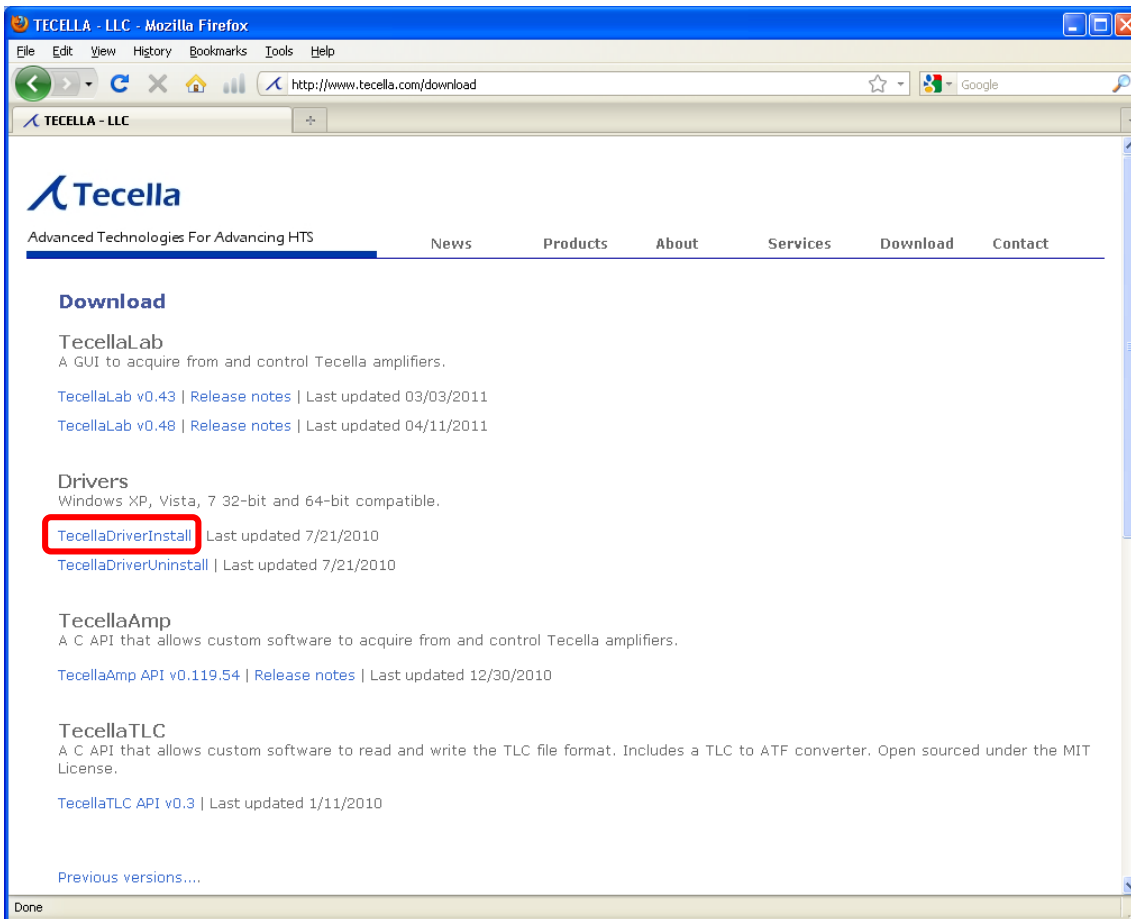
1.1 Minimum Computer Requirements

The following are the minimum computer requirements.

- Processor (CPU)
 - Any multi-core Intel or AMD processor, or
 - Minimum 2GHz single-core Intel or AMD processor
- 3GB RAM (4GB or more recommended)
- 5GB free space on Hard Drive
- One free USB 2.0 port
- Windows 10, 8.1, 8, 7, Vista, XP

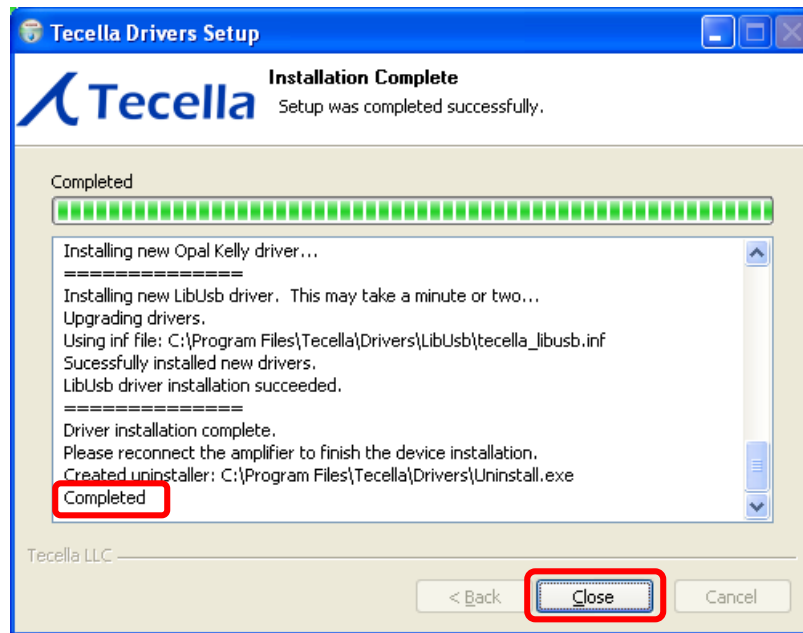
2. Install the driver

Go to www.tecella.com/download and click on “TecellaDriverInstall” link to download the driver installer to your computer. If your product came with a CD, then the TecellaDriverInstall file can also be found on the CD.



Double click on the TecellaDriverInstall file to run the installer on your computer, and follow the directions on the screen.

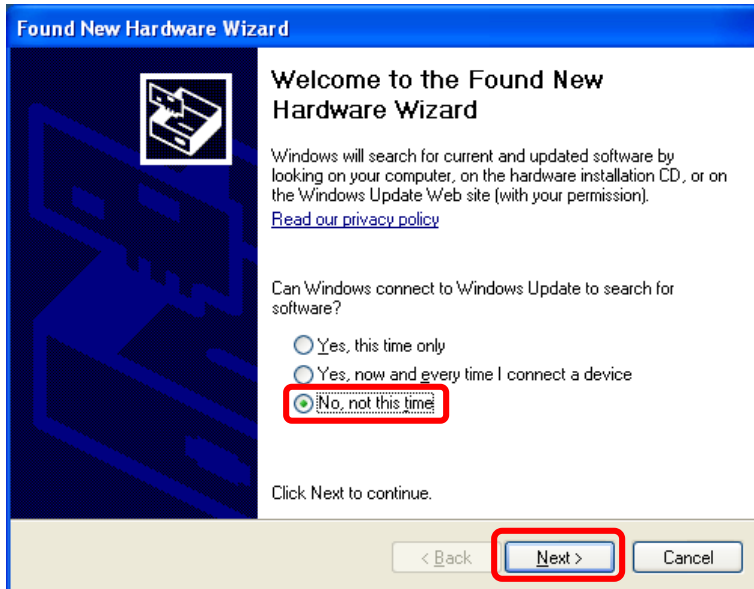
After successful completion, the driver installer window should look like below. Click on “Close” to close the driver installer window.



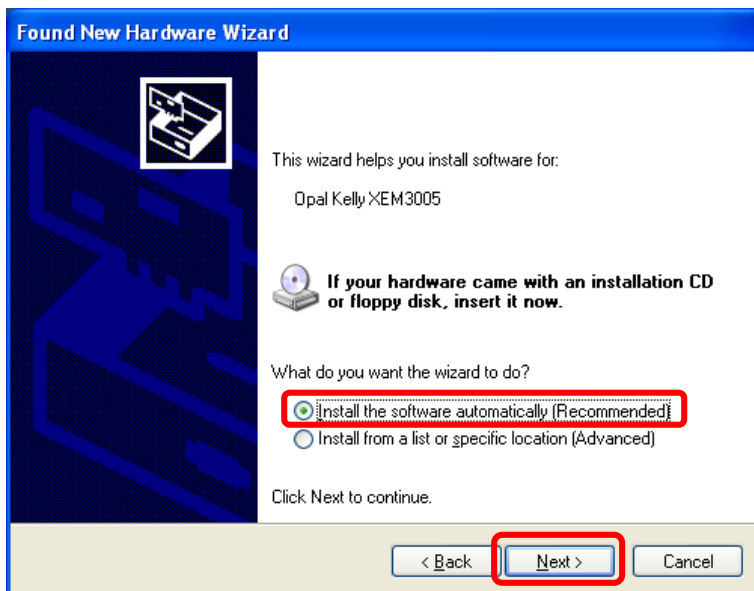
3. Windows XP – “Found New Hardware Wizard”

On Windows XP, the “Found New Hardware Wizard” will launch the very first time the amplifier is plugged in. Please perform the following steps.

A few seconds after connecting the amplifier to the computer and powering on the amplifier for the very first time, the following screen will appear. Click on “No, not this time”, then click on “Next”.



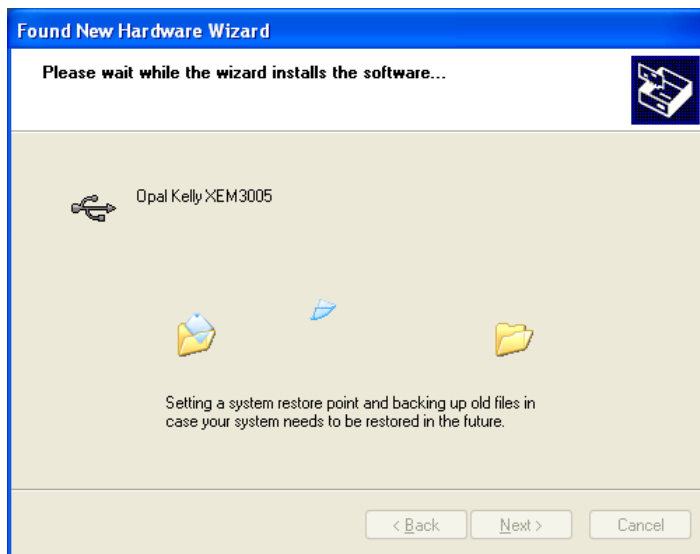
Click on “Install the software automatically. (Recommended)”, then click on “Next”.



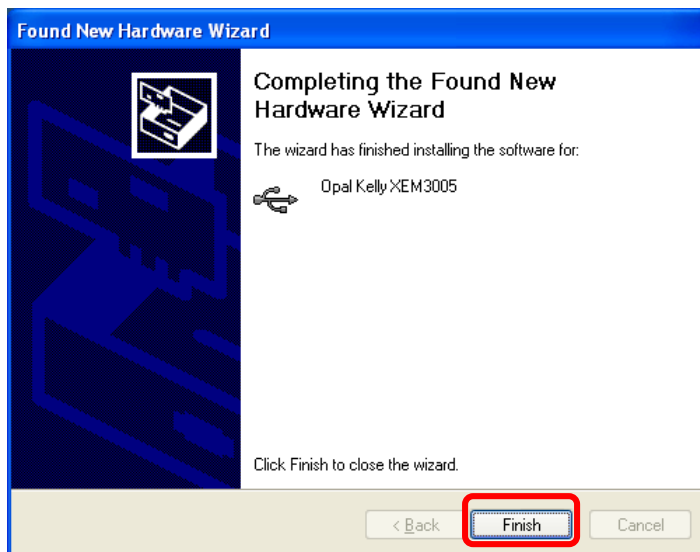
If the following screen appears, click on “Continue Anyway”.



The following screen will appear.



After several seconds, the following screen will appear. Click on “Finish” to complete the installation of your amplifier.



Your amplifier is ready for use.