

Pico Driver Installation

Document Revision 2.6
July 22, 2021

Tecella
97 Chaumont Cir
Foothill Ranch, CA 92610, USA
www.tecella.com
info@tecella.com
+1-714-641-1709
+1-714-641-1569 Fax

1. Introduction

This document outlines the steps for properly installing the Tecella driver on a Windows system.

1.1 Minimum Computer Requirements

The following are the minimum computer requirements.

- Processor (CPU)
 - Any multi-core Intel or AMD processor, or
 - Minimum 2GHz single-core Intel or AMD processor
- 3GB RAM (4GB or more recommended)
- 5GB free space on Hard Drive
- One free USB 2.0 port
- Windows 11, 10, 8, 7, Vista, XP

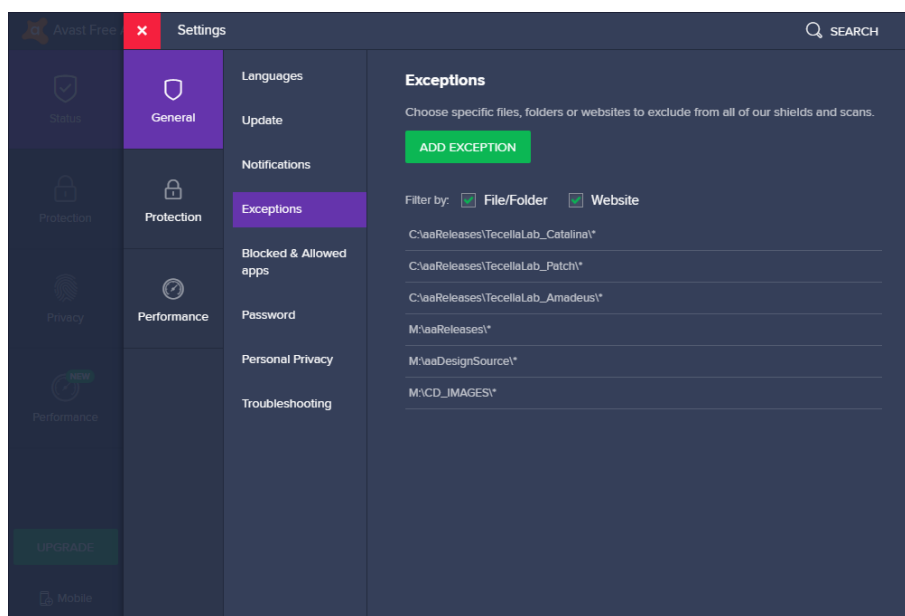
1.2 Disabling Anti-Virus software during Installation & Add Exception Rule (optional, but recommended)

If the installed driver does not function properly, then turn off your Anti-Virus software during driver installation.

If the driver installs successfully, but the software application (such as TecellaLab) does not function properly, then add an exception rule to your anti-virus software settings to exclude the folder containing the software applications.

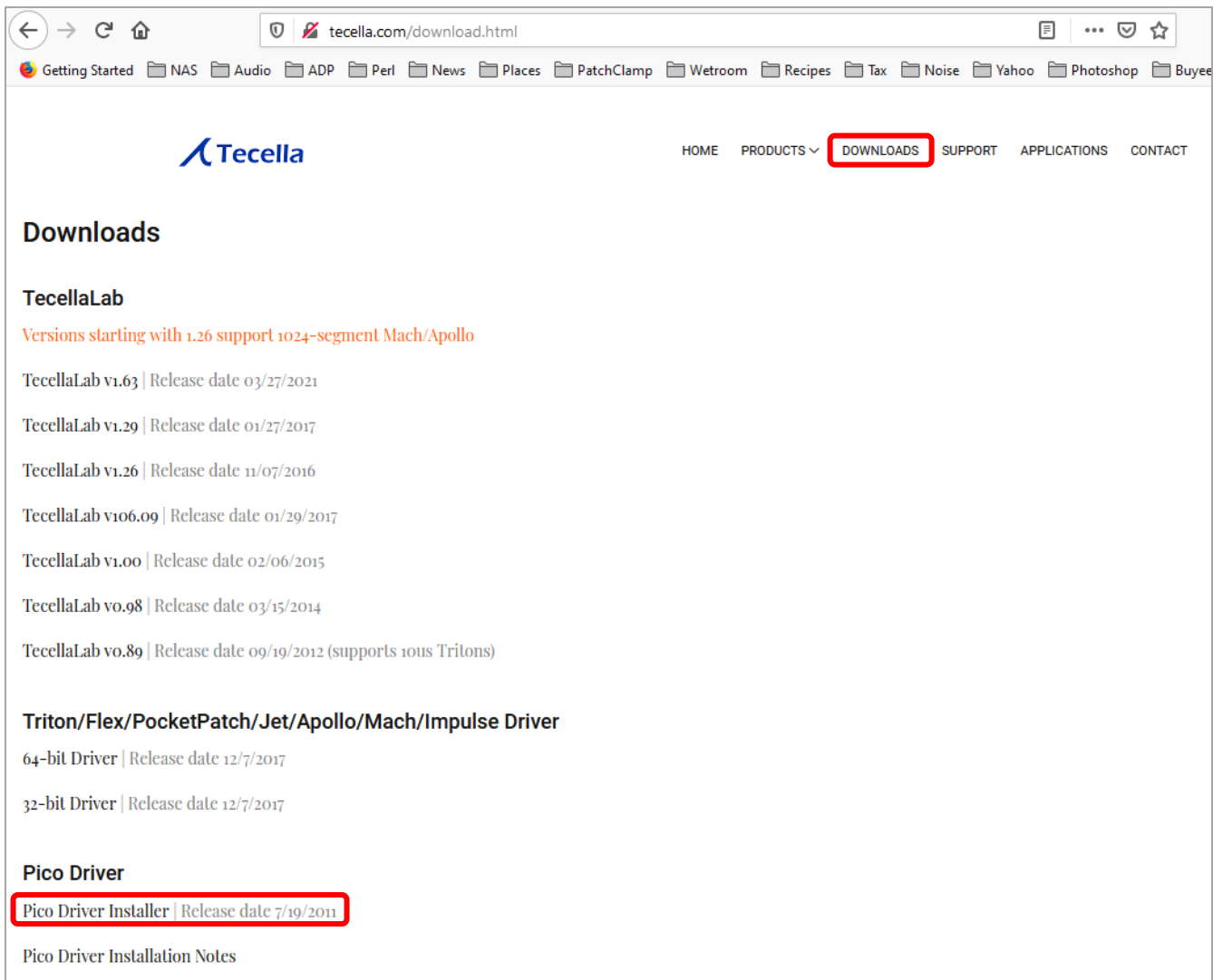
As an example, for Avast:

- Go to: **Menu > Settings**
- In the settings window, go to: **General > Exceptions**, and enter the exception folder(s).



3. Install the driver

The Tecella driver installer can be found on the USB memory stick or the CD that came with your Pico. You can also download it from www.tecella.com under Downloads.



Downloads

TecellaLab
Versions starting with 1.26 support 1024-segment Mach/Apollo

- TecellaLab v1.63 | Release date 03/27/2021
- TecellaLab v1.29 | Release date 01/27/2017
- TecellaLab v1.26 | Release date 11/07/2016
- TecellaLab v106.09 | Release date 01/29/2017
- TecellaLab v1.00 | Release date 02/06/2015
- TecellaLab v0.98 | Release date 03/15/2014
- TecellaLab v0.89 | Release date 09/19/2012 (supports 10us Tritons)

Triton/Flex/PocketPatch/Jet/Apollo/Mach/Impulse Driver

- 64-bit Driver | Release date 12/7/2017
- 32-bit Driver | Release date 12/7/2017

Pico Driver

- Pico Driver Installer | Release date 7/19/2011**
- Pico Driver Installation Notes

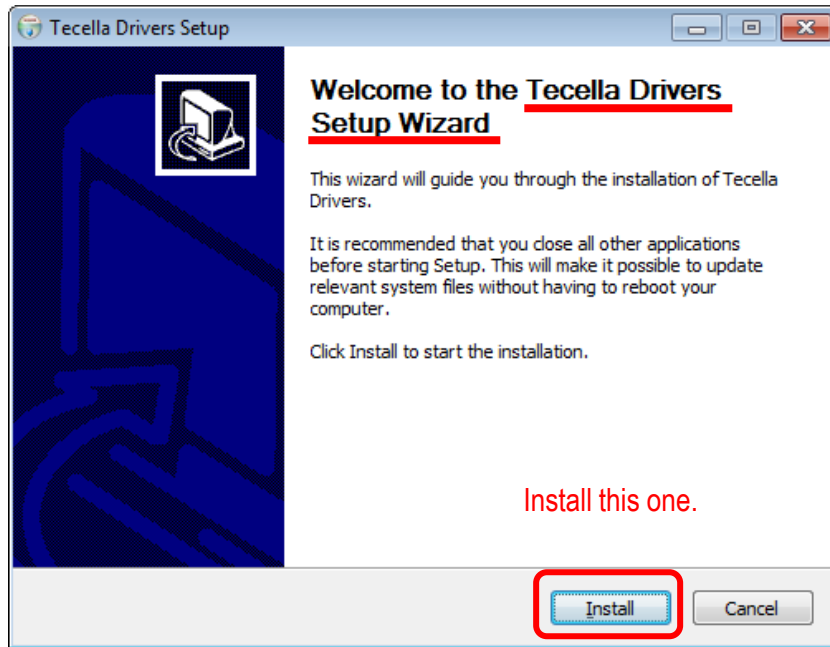
Once downloaded, double click on it to start the installer.

The Pico Driver Installer has 2 parts.

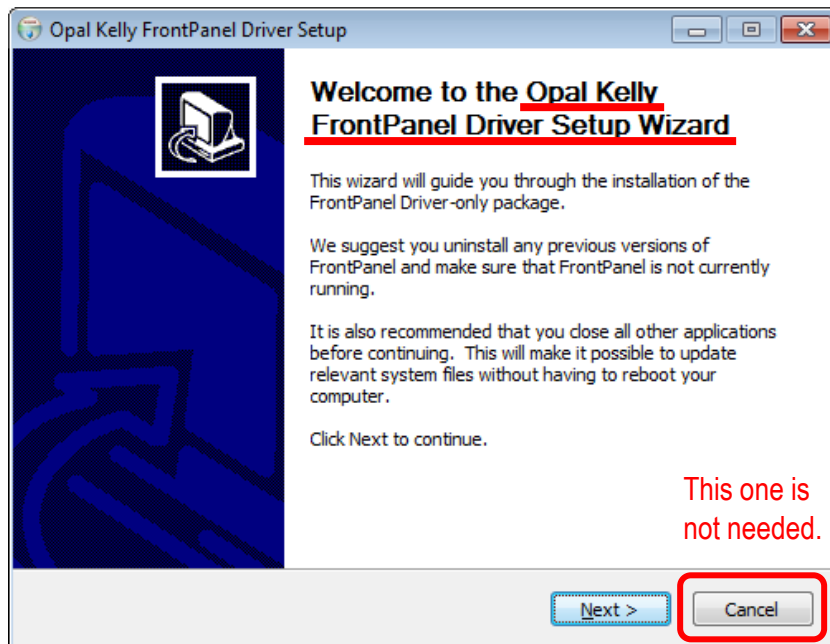
Part 1: Tecella Drivers Setup Wizard (for the Pico)

Part 2: Opal Kelly FrontPanel Driver Setup Wizard (for multi-channel amplifiers)

For the Pico, [only the first installer](#) is necessary. Click install.



After the installation of the above is finished, you will see the window below for the Opal Kelly Driver. You can cancel this installer.



After successful completion, you will see the window below. Click on “Close” to close the driver installer window.

